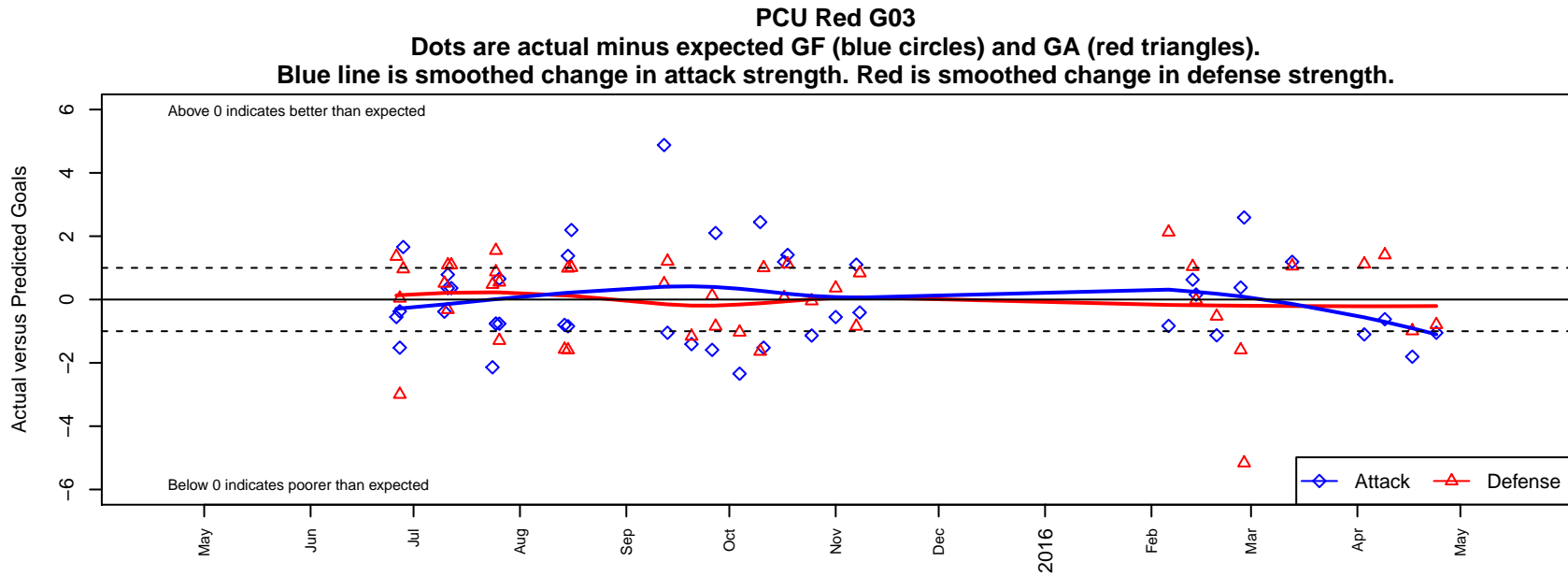


PCU Red G03

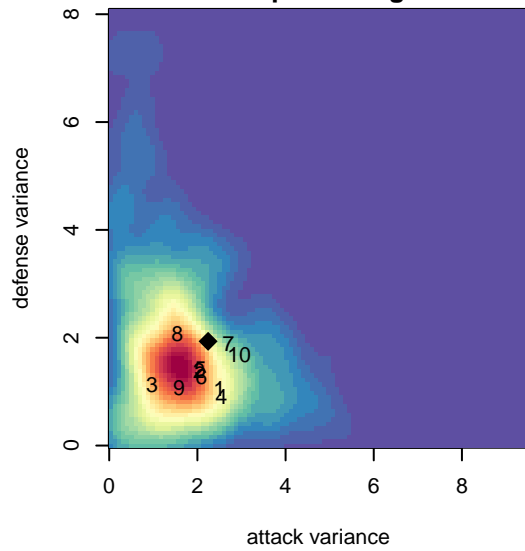
Portland City United SC
 Portland, OR
 G03 total strength=831
 attack=1.42 defense=0.87
 fall league = PTT G03 Premier Silver
 spr league = Spr OYS G03 Premier Red

alt names used:
 PCU 03G Red I
 PCU G03 Red
 PCUSC G03 RED 1
 PORTLAND CITY UNITED G03 RED 1
 PCU 03G Red 1
 PCU 03G Red 1
 PCU 03G Red 1

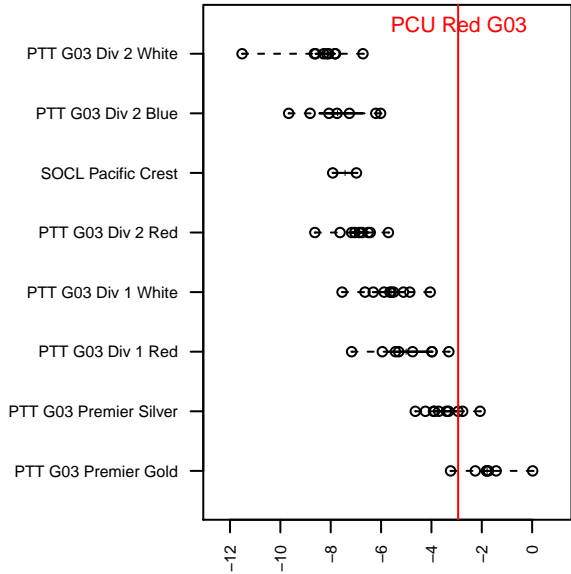
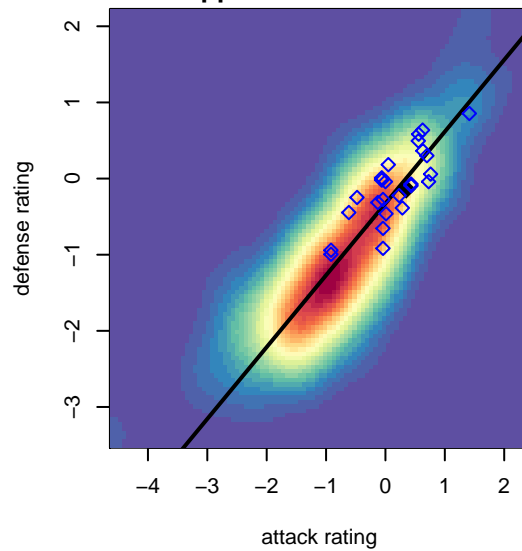
Venues played:
 2015 Clash At the Border Gold U12
 2015 PCU Summer Classic U12 Gold
 2015 Crossfire Select GU12 Gold
 2015 Mt Hood Challenge U12
 2015 PTT G03 Premier Silver
 2015 Spr OYS G03 Premier Red
 2015 OYS State Cup G03



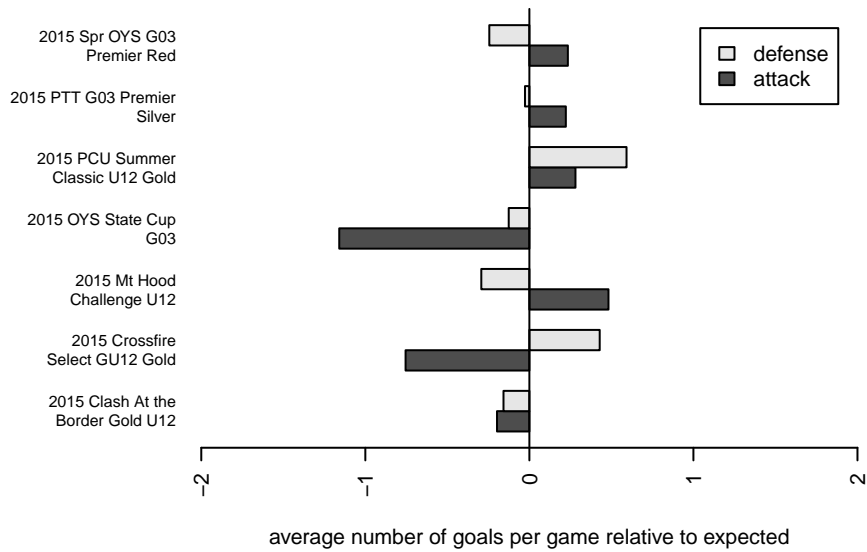
**attack and defense variance (black dot)
relative to other teams
and top 10 in region**



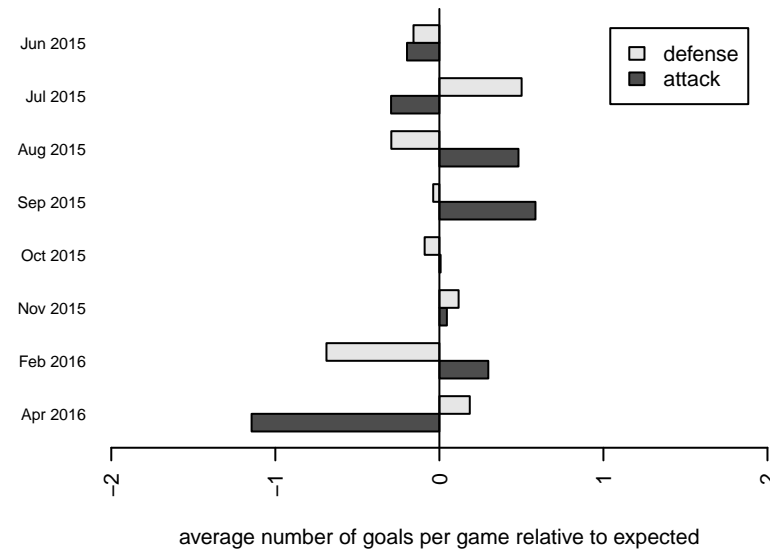
**attack and defense rating
relative to others at age
and all opponents in last 13 months**



Performance relative to 13 month average



Performance relative to 13 month average



| date | home | | away | | venue | pred.home | pred.away |
|-------------|-----------------------------------|---|--------------------------------------|---|------------------------------|------------------|------------------|
| 2016-04-24 | PCU Red G03 | 1 | ETFC Lyon Black G03 | 2 | 2015 OYS State Cup G03 | 2.05 | 1.21 |
| 2016-04-17 | PCU Red G03 | 0 | Crossfire OR WUSC Juventus White G03 | 2 | 2015 OYS State Cup G03 | 1.81 | 1.01 |
| 2016-04-09 | THUSC Selenium Black G03 | 3 | PCU Red G03 | 0 | 2015 OYS State Cup G03 | 4.41 | 0.62 |
| 2016-04-03 | NEU PDX White G03 | 1 | PCU Red G03 | 0 | 2015 Spr OYS G03 Premier Red | 2.12 | 1.10 |
| 2016-03-13 | PCU Red G03 | 3 | Rogue Valley Timbers Red G03 | 0 | 2015 Spr OYS G03 Premier Red | 1.81 | 1.06 |
| 2016-02-28 | THUSC Selenium Green G03 | 7 | PCU Red G03 | 4 | 2015 Spr OYS G03 Premier Red | 1.84 | 1.41 |
| 2016-02-27 | PCU Red G03 | 1 | THUSC Selenium Black G03 | 6 | 2015 Spr OYS G03 Premier Red | 0.62 | 4.41 |
| 2016-02-20 | PCU Red G03 | 0 | BSC Portland Black-Legends G03 | 3 | 2015 Spr OYS G03 Premier Red | 1.13 | 2.47 |
| 2016-02-14 | Crossfire OR SSC Blue I G03 | 2 | PCU Red G03 | 1 | 2015 Spr OYS G03 Premier Red | 1.99 | 0.84 |
| 2016-02-13 | PCU Red G03 | 2 | Washington Timbers Red G03 | 1 | 2015 Spr OYS G03 Premier Red | 1.37 | 2.04 |
| 2016-02-06 | Westside Timbers Copa Red TS G03 | 0 | PCU Red G03 | 0 | 2015 Spr OYS G03 Premier Red | 2.13 | 0.83 |
| 2015-11-08 | PCU Red G03 | 1 | THUSC Selenium Green G03 | 1 | 2015 PTT G03 Premier Silver | 1.41 | 1.84 |
| 2015-11-07 | THUSC Selenium 3 G03 | 2 | PCU Red G03 | 4 | 2015 PTT G03 Premier Silver | 1.15 | 2.90 |
| 2015-11-01 | PCU Red G03 | 1 | Crossfire OR LOSC Rage G03 | 1 | 2015 PTT G03 Premier Silver | 1.55 | 1.36 |
| 2015-10-25 | PCU Red G03 | 1 | Bend FC Timbers Red G03 | 1 | 2015 PTT G03 Premier Silver | 2.14 | 0.95 |
| 2015-10-18 | PCU Red G03 | 3 | FC Salmon Creek Nemesis White G03 | 0 | 2015 PTT G03 Premier Silver | 1.59 | 1.12 |
| 2015-10-17 | Rogue Valley Timbers Red G03 | 1 | PCU Red G03 | 3 | 2015 PTT G03 Premier Silver | 1.06 | 1.81 |
| 2015-10-11 | Azul FC Spartans G03 | 0 | PCU Red G03 | 2 | 2015 PTT G03 Premier Silver | 1.00 | 3.52 |
| 2015-10-10 | Crossfire OR LOSC Rage G03 | 3 | PCU Red G03 | 4 | 2015 PTT G03 Premier Silver | 1.36 | 1.55 |
| 2015-10-04 | PCU Red G03 | 0 | Westside Timbers Copa White TS G03 | 2 | 2015 PTT G03 Premier Silver | 2.34 | 0.97 |
| 2015-09-27 | PCU Red G03 | 5 | THUSC Selenium 3 G03 | 2 | 2015 PTT G03 Premier Silver | 2.90 | 1.15 |
| 2015-09-26 | FC Salmon Creek Nemesis White G03 | 1 | PCU Red G03 | 0 | 2015 PTT G03 Premier Silver | 1.12 | 1.59 |
| 2015-09-20 | THUSC Selenium Green G03 | 3 | PCU Red G03 | 0 | 2015 PTT G03 Premier Silver | 1.84 | 1.41 |
| 2015-09-13 | ETFC Lyon Black G03 | 0 | PCU Red G03 | 1 | 2015 PTT G03 Premier Silver | 1.21 | 2.05 |
| 2015-09-12 | PCU Red G03 | 7 | CSC Storm Navy G03 | 1 | 2015 PTT G03 Premier Silver | 2.12 | 1.49 |
| 2015-08-16 | PCU Red G03 | 4 | Crossfire OR WUSC Juventus White G03 | 0 | 2015 Mt Hood Challenge U12 | 1.81 | 1.01 |
| 2015-08-15 | THUSC Selenium Black G03 | 6 | PCU Red G03 | 2 | 2015 Mt Hood Challenge U12 | 4.41 | 0.62 |
| 2015-08-15 | Crossfire OR SSC Blue I G03 | 1 | PCU Red G03 | 0 | 2015 Mt Hood Challenge U12 | 1.99 | 0.84 |

| date | home | | away | | venue | pred.home | pred.away |
|-------------|------------------------------------|---|------------------------------|---|-----------------------------------|------------------|------------------|
| 2015-08-14 | Capital FC Timbers Red G03 | 3 | PCU Red G03 | 1 | 2015 Mt Hood Challenge U12 | 1.42 | 1.80 |
| 2015-07-26 | PCU Red G03 | 3 | Crossfire Select Tacey G03 | 2 | 2015 Crossfire Select GU12 Gold | 2.35 | 0.71 |
| 2015-07-26 | Nortac Sparta Red G03 | 1 | PCU Red G03 | 0 | 2015 Crossfire Select GU12 Gold | 1.55 | 0.76 |
| 2015-07-25 | Nortac Sparta Red G03 | 0 | PCU Red G03 | 0 | 2015 Crossfire Select GU12 Gold | 1.55 | 0.76 |
| 2015-07-25 | FPSC Fury Black G03 | 1 | PCU Red G03 | 0 | 2015 Crossfire Select GU12 Gold | 1.87 | 0.76 |
| 2015-07-24 | PCU Red G03 | 2 | TSS 2004G | 0 | 2015 Crossfire Select GU12 Gold | 4.14 | 0.48 |
| 2015-07-12 | PCU Red G03 | 2 | Eastside Timbers Red G03 | 1 | 2015 PCU Summer Classic U12 Gold | 1.64 | 2.09 |
| 2015-07-11 | Eastside Timbers Red G03 | 1 | PCU Red G03 | 2 | 2015 PCU Summer Classic U12 Gold | 2.09 | 1.64 |
| 2015-07-11 | PCU Red G03 | 3 | Washington Timbers Green G03 | 1 | 2015 PCU Summer Classic U12 Gold | 2.21 | 0.68 |
| 2015-07-10 | PCU Red G03 | 3 | PCU Red 2 G03 | 0 | 2015 PCU Summer Classic U12 Gold | 3.38 | 0.51 |
| 2015-06-28 | Westside Timbers Copa White TS G03 | 0 | PCU Red G03 | 4 | 2015 Clash At the Border Gold U12 | 0.97 | 2.34 |
| 2015-06-27 | PCU Red G03 | 2 | Azul FC Spartans G03 | 4 | 2015 Clash At the Border Gold U12 | 3.52 | 1.00 |
| 2015-06-27 | Washington Timbers Red G03 | 2 | PCU Red G03 | 1 | 2015 Clash At the Border Gold U12 | 2.04 | 1.37 |
| 2015-06-26 | PCU Red G03 | 1 | Crossfire OR LOSC Rage G03 | 0 | 2015 Clash At the Border Gold U12 | 1.55 | 1.36 |